

MEETINGS & EVENTS

Successful Meetings & Events in an exclusive atmosphere

Incentives

Surrounded by deep blue lakes and the pristine nature of the Mecklenburg Lake District, the Radisson Blu Resort Schloss Fleesensee is a perfect starting point for numerous indoor and outdoor incentives:

- Boat & raft building
- Bosseling
- Cocktail course
- Dragon boat race
- Torch walk
- Golf course to try
- Canoeing
- Climbing forest
- Wagon ride through the Müritz Nationalpark
- Kitchen party, cooking classes
- Nationalpark tours
- Offroad in gravel pit
- Quad tours
- Biking
- Castle indoor golf
- Survival training
- Country & Western evening



Welcome

In the middle of a thousand lakes landscape of northern Germany, on the edge of the Müritz Nationalpark, is the Radisson Blu Resort Schloss Fleesensee to crown the center of the Land Fleesensee. The former castle Blücher from 1842 is easily to reach from Berlin and Hamburg in less than two hours by car. Its fabulous location and the pleasant atmosphere of discreet, first class restaurants and a coordinated service your needs to make the Schloss Fleesensee to a place that is created for individual events of all kinds.

- 178 rooms and suites
- 3 restaurants, 2 bars and a wintergarden
- 12 conference rooms for up to 250 person with daylight, some with air condition, terrace access and split into several sections
- for larger events with up to 600 person should be directly followed by the event center "Tenne Fleesensee"
- spacious foyer for coffee breaks and receptions
- presentation technology
- free high speed internet access via WLAN

Do you like it more exclusive? Enjoy the bars, restaurants or even the entire castle can be hired exclusively.

Specialties

- central and quiet location in the green (just 5 minutes to the highway)
- a unique opportunity for teambuilding and incentives for innovative breaks: terraces and numerous green spaces
- car presentation at the cour d'honneur with castle scenery
- the fabulous castle garden is ideal for great open-air events; unlimited meeting area
- surrounded by three 18-hole and two 9-hole golf courses
- bath, sauna and spa area of 6.000 m², riding and water sports

Service Concepts

- Luggage service
- Valet car parking service
- Complimentary parking near hotel
- Parking garage (10 EUR for 24-hour ticket)
- Concierge service
- VIP service
- 24-hours room service
- Yes I Can! Service Philosophy
- Discount on entry into the Fleesensee SPA
- 20% greenfee discount on all 18 hole golf courses
- Free shuttle service
- environmentally certified by TÜV Rheinland



BY CAR

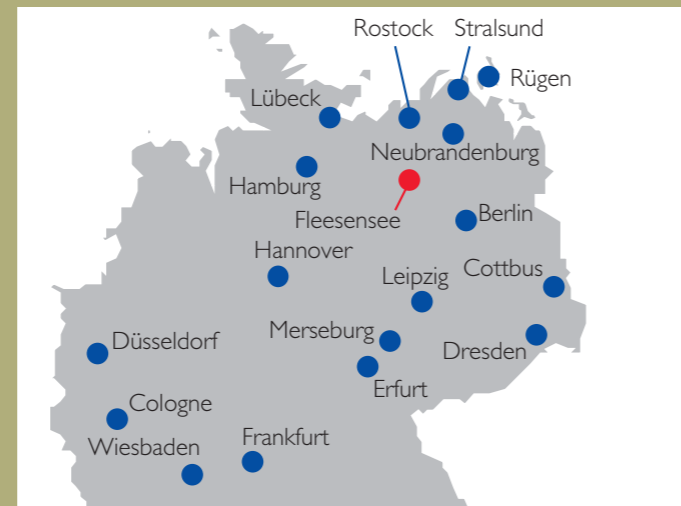
To get to Land Fleesensee, follow the A19 Berlin-Rostock until the exit is marked with Waren (Müritz). Follow the signs for "Land Fleesensee" and follow the signposts for Waren and Göhren-Lebbin. After about 7 km you will reach Penkow. At the traffic light turn left towards Göhren-Lebbin and in less than five minutes you will reach Radisson Blu Resort Schloss Fleesensee. The journey takes 1 1/2 hours from Berlin (150 km), 2 hours from Hamburg (200 km) and 1 hour from Rostock (90 km). Please obey the speed limits after leaving the motorway.

BY TRAIN

Waren (Müritz) train station is a main line station and is easily accessible from any large train station. The taxi ride from here to the hotel takes only 20 minutes.

BY PLANE

The nearest airports are Berlin-Tegel, Hamburg-Fuhlsbüttel and Rostock-Laage. With a shuttle from Rostock-Laage, or a rental car you can reach us easily, or alternatively the train to Waren (Müritz) for use directions.



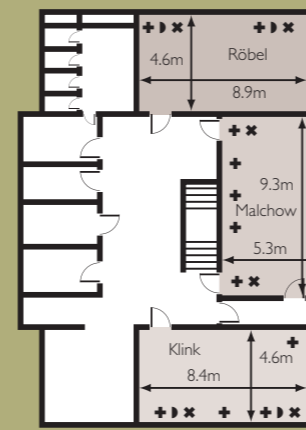
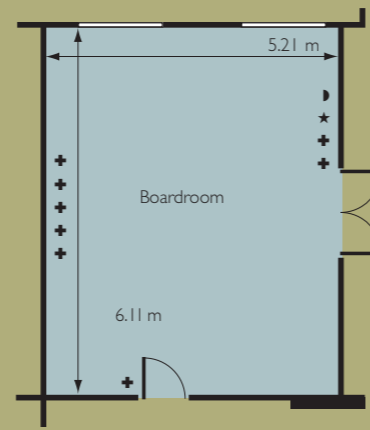
Radisson Blu Resort Schloss Fleesensee

Schlossstraße 1, D-17213 Göhren-Lebbin, Germany
Tel: +49 (0) 39932 8010-3414, Fax: +49 (0) 39932 8010-3590
meetings.fleesensee@radissonblu.com
radissonblu.com/resort-fleesensee

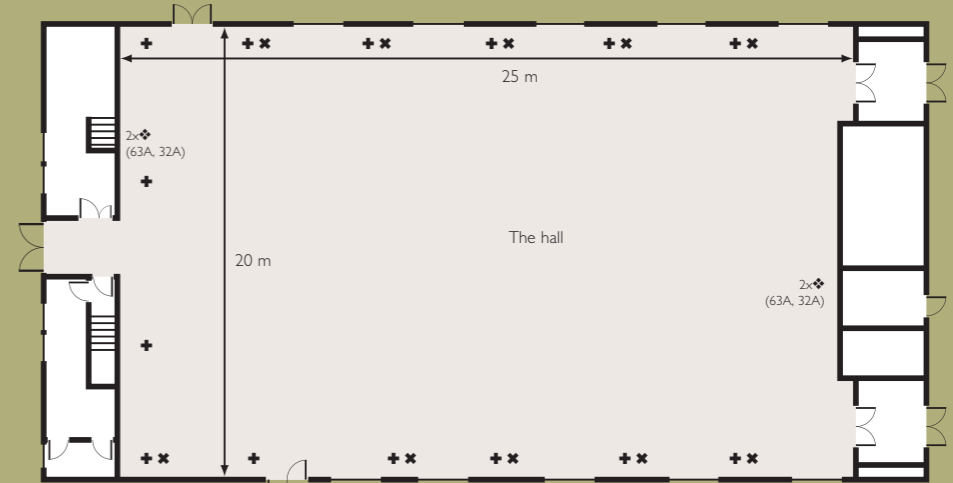


Key to diagram

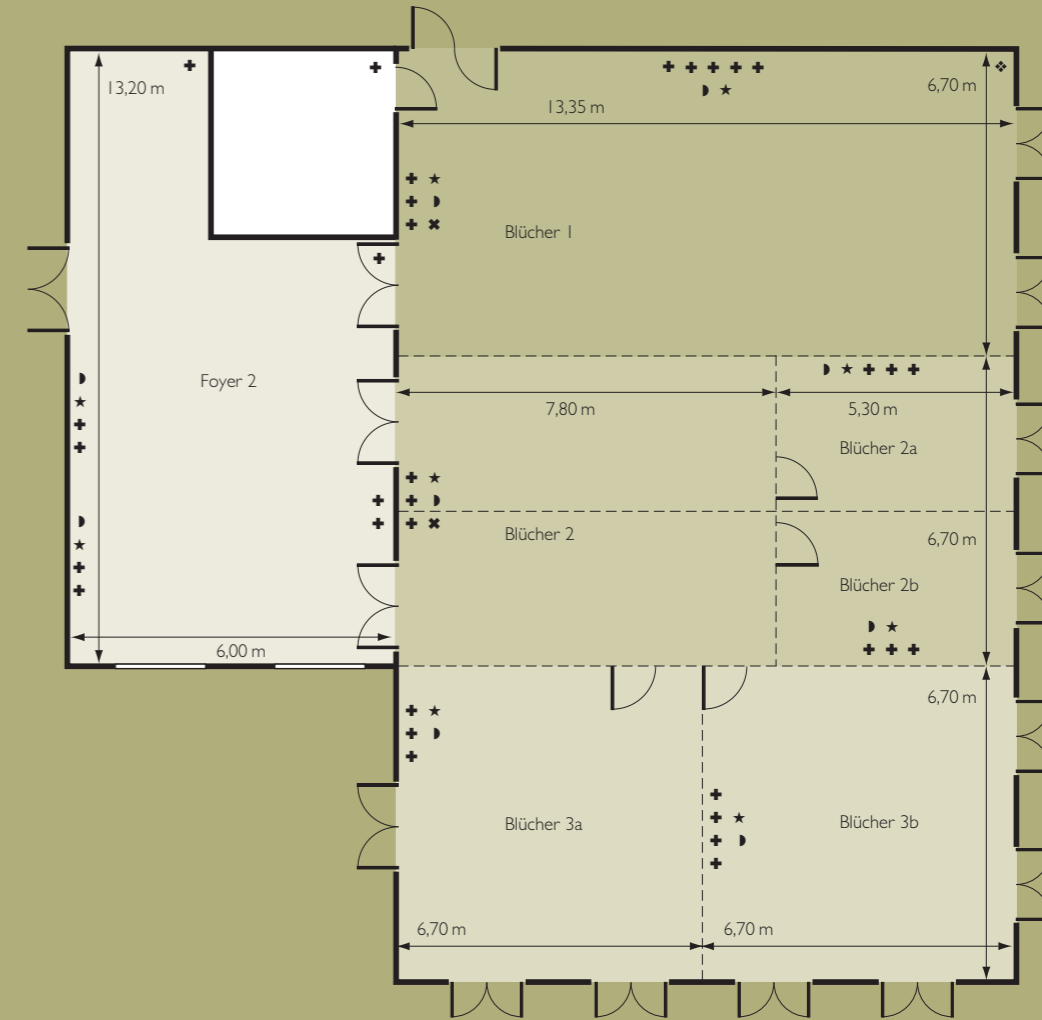
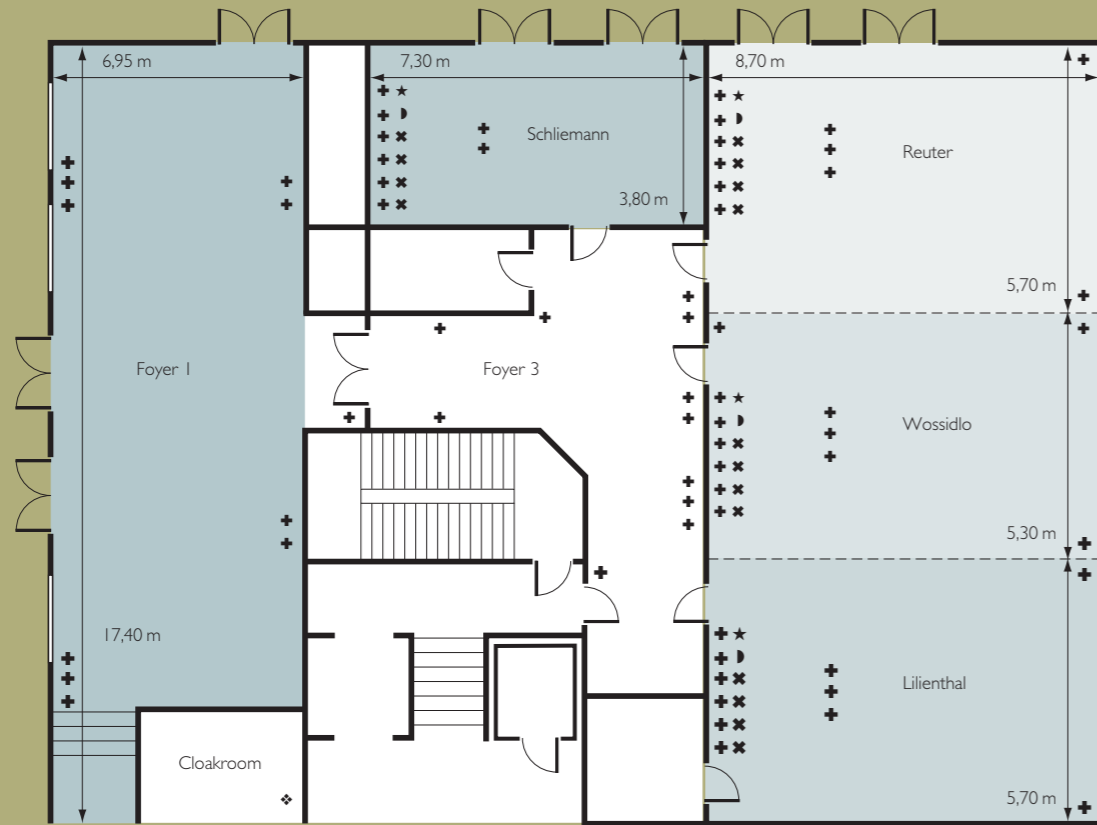
- ⊕ Single power point
- ☎ Telephone, fax and modem socket
- ★ TV and radio socket
- ✕ LAN, ISDN-/PC-socket
- ⚡ Three-phase current connection



“Die Tenne” First floor



“Die Tenne” Ground floor



“Die Tenne”	U-Table	Block-Table	Banquet	Classroom seating	Theatre seating	Receptions	Room height in m	Length and width in m	Floor dimensions in square m	Height of entrance door in m	Width of entrance door in m	Number of power sockets	W-LAN	Daylight	TV-connection Sockets	Telephone connections
Boardroom	-	12	12	-	-	-	4,30	6,11 x 5,21	33	2,07	0,90	8	✓	✓	1	3
Schliemann	10	12	8	14	20	12	3,25	7,30 x 3,80	28	2,07	0,90	11	✓	✓	2	8
Lilienthal	16	18	32	24	48	35	3,25	8,70 x 5,70	50	2,07	0,90	11	✓	✓	2	8
Wossidlo	16	18	32	24	48	35	3,25	8,70 x 5,30	46	2,07	0,90	12	✓	✓	2	8
Reuter	16	18	32	24	48	35	3,25	8,70 x 5,70	50	2,07	0,90	12	✓	✓	2	8
Lilienthal + Reuter + Wossidlo	38	40	96	90	130	105	3,25	8,70 x 16,70	145	2,07	0,90	35	✓	✓	6	24
Lilienthal + Wossidlo	24	26	56	54	80	70	3,25	8,70 x 11,0	96	2,07	0,90	23	✓	✓	4	16
Wossidlo + Reuter	24	26	56	54	80	70	3,25	8,70 x 11,0	96	2,07	0,90	23	✓	✓	4	16
Foyer I	-	-	-	-	-	110	4,20	17,40 x 6,95	115	2,51	0,90	24	✓	✓	-	4

“Die Tenne”	U-Table	Block-Table	Banquet	Classroom seating	Theatre seating	Receptions	Room height in m	Length and width in m	Floor dimensions in square m	Height of entrance door in m	Width of entrance door in m	Number of power sockets	W-LAN	Daylight	TV-connection Sockets	Telephone connections
Röbel	14	20	-	20	30	-	4,75	8,90 x 4,60	41	2,10	0,93	8	✓	✓	-	2
Malchow	20	30	-	30	45	-	3,20	9,30 x 5,30	49	2,10	0,93	9	✓	✓	-	1
Klink	14	20	-	20	30	-	4,75	8,40 x 4,60	39	2,10	0,93	7	✓	✓	-	2
Saal	80	100	300	260	600	600	13,0	25,0 x 20,0	500	3,43	3,10	80	✓	✓	-	1

“Die Tenne”	U-Table	Block-Table	Banquet	Classroom seating	Theatre seating	Receptions	Room height in m	Length and width in m	Floor dimensions in square m	Height of entrance door in m	Width of entrance door in m	Number of power sockets	W-LAN	Daylight	TV-connection Sockets	Telephone connections
Blücher (gesamt)	54	56	192	198	250	210	4,20	13,35 x 20,30	270	2,75	2,95	29	✓	✓	7	22
Blücher 1	28	30	56	54	90	70	4,20	13,35 x 6,70	90	2,45	1,90	9	✓	✓	2	5
Blücher 2	28	30	56	54	90	70	4,20	13,35 x 6,70	90	2,45	1,90	11	✓	✓	3	10
Blücher 3	28	30	56	54	90	70	4,20	13,35 x 6,70	90	2,75	2,95	9	✓	✓	2	7
Blücher 1 + 2	38	40	120	108	162	140	4,20	13,35 x 13,50	180	2,45	1,90	20	✓	✓	5	15
Blücher 2 + 3	38	40	120	108	162	140	4,20	13,35 x 13,50	180	2,45	1,90	20	✓	✓	5	17
Blücher 3a	14	16	16	18	36	20	4,20	6,70 x 6,70	45	2,45	1,90	5	✓	✓	1	4
Blücher 3b	14	16	16	18	36	20	4,20	6,70 x 6,70	45	2,45	1,90	4	✓	✓	1	-
Blücher 2a/b	12	-	8	16	18	15	4,20	5,30 x 6,70	35,5	2,45	1,90	8	✓	✓	1	8
Foyer 2	-	-	-	-	-	90	4,20	13,20 x 6,00	84	2,45	1,90	12	✓	✓	-	4